



# APRE

Agenzia per la Promozione  
della Ricerca Europea

## The role of HORIZON EUROPE projects

Pocaterra Chiara

Head of Projects Department

**State of implementation of the sustainable and circular Bioeconomy in Europe and worldwide“**

Presidency of the Council of Ministers

Rome, 14/11/2023



## RuralBioUp

Empowering EU Rural Regions to scale-Up and adopt small-scale Bio-based solutions: the transition towards a sustainable, regenerative, inclusive, and just circular bioeconomy

APRE Coordinator: 12 partners from 9 EU countries (Italy, Portugal, Estonia, Austria, Czech Republic, Ireland, France, Romania and Latvia)





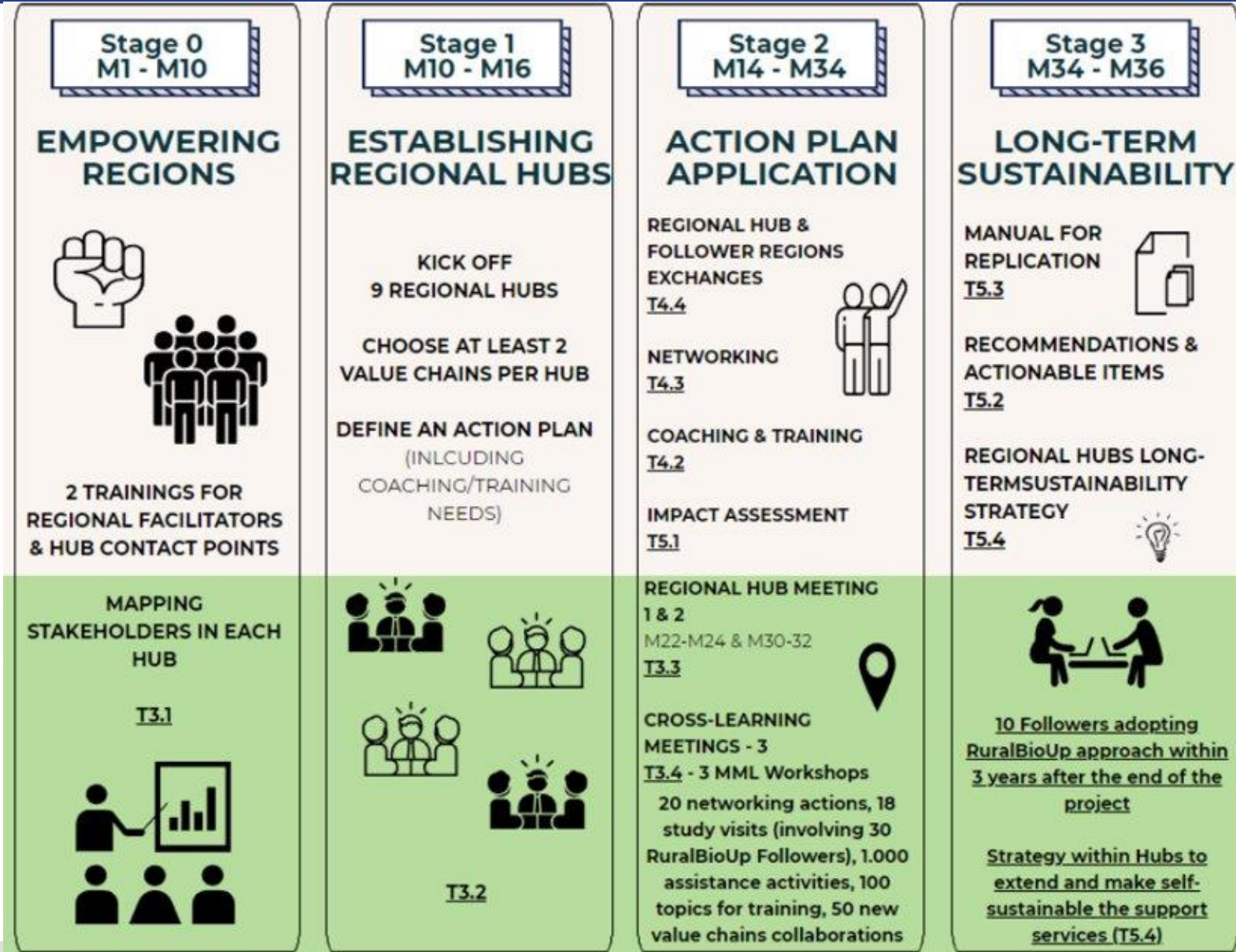
## RuralBioUp: objectives

- ▣ To support regional actors (e.g., policy makers, innovators, farmers, foresters) to scale-up and develop local bio-based solutions with a view to boost rural development at the regional and local level
- ▣ To strengthen the cooperation among regional key actors by establishing 9 Regional Hubs in 6 EU countries, where a set of empowering activities will be implemented (e.g. development of Actions Plans, trainings, mentoring, coaching, MML workshops, co-creation and networking events) to support development of local bio-economy initiatives
- ▣ Data mapping and development of One-Stop Shop an online matching tool gathering bio-economy related information (e.g. on biomass, business models, technologies, financial support) to help local stakeholders to effectively plan and implement their bio-based activities



# Outputs

- ❏ RuralBioUp One-Stop-Shop validated by external experts integrating the existing knowledge and data on regional bio-based solutions
- ❏ 270 stakeholders involved in 9 Regional Hubs
- ❏ Development of 9 Action Plans to be implemented in the hubs
- ❏ 100 training topics, 4.000 persons trained
- ❏ 20 networking events, 2.000 persons participating
- ❏ 30 RuralBioUp Followers from 15 countries not covered by the consortium





## BIOMODEL4REGIONS

- Supporting the establishment of the innovative governance models to achieve better-informed decision-making processes, social engagement and innovation in the bio-based economy
- The consortium consists of 12 partners from 8 different countries (Italy, France, Slovakia, Sweden, the Netherland, Greece, Germany, Poland), APRE partner



## BIOMODEL4REGIONS: objectives

- ↗ The main goal is to develop innovative governance models at regional and local level, that will support the development of bio-based economy strategies.
- ↗ To do so BIOMODEL4REGIONS will work closely in 6 pilot regions chosen in clusters' network. The regional actors will involve the local stakeholders to be part of this process.



## Outputs

- ❏ The creation of a supporting governance structure and related capacities for regional authorities in the 6 pilot regions
- ❏ Supporting the development of bio-based economy strategies in 6 pilot regions
- ❏ Recruiting a group of 3 additional European regions to replicate the project actions with the aim of developing their own bio-based economy strategy, by preparing a replication guide, and by preparing materials with degree of abstraction, to applied Europe-wide, to foster the replication throughout Europe.



The six Pilot regions



## BLUEREV

- BlueRev will revitalise European local communities with innovative bio-based business, governance models and social innovations focused on the blue bio-based sector
- The consortium consists of 9 partners from 6 different countries (Italy, Denmark, Portugal, Sweden, Norway, Estonia), APRE coordinator





## BLUEREV: objectives

- BlueRev aims to select a range of systems in the blue bio-based sector in 3 different pilot regions throughout Europe, i.e. Denmark, Italy and Estonia (pilot regions), to tailor value chains, from valorisation of co-products as feedstock to processing/conversion to final products, in order to revitalise local communities, both in a territorial and social sense and contribute to positive environmental and social impacts.
- The project will analyse these value chains according to social, economic and environmental barriers and potentialities, business models, local capacities such as feedstocks, infrastructure, human skills, innovation actors, including community knowledge and marginalised groups, by using existing or improved monitoring system and indicators to evaluate the effectiveness of the value chains.



## Outputs

- The creation of a support tool including training resources, inspiring multimedia galleries, webinars, interactive community engagement, gamified analytics, coaching programmes





## Bioeconomy Changemakers Festival 2024

- 🏠 The festival will take place between 11-17/03/2024 in various locations across the EU.
- 🏠 A high-level main event organised by the European Commission will take place in **Brussels on 14 and 15 March 2024**.
- 🏠 APRE together with Cluster SPRING, ScienzaInsieme and FVA will organize the event on the **12<sup>th</sup> of March in Italy**
- 🏠 The Festival aims to engage youth as drivers of the transformative change required in view of the multiple challenges the EU is facing today, and to unlock the full potential of the bioeconomy.
- 🏠 [Link](#)



## Rural Bioeconomy Alliance (RBA)

- ▣ The Rural Bioeconomy Alliance (RBA) is a **cluster of European-funded projects** aimed at accelerating and supporting the development of circular rural Bioeconomy initiatives in the EU.
- ▣ With a focus on rural sustainable circular bioeconomy initiatives, the RBA investigates, develops, and analyzes success stories, best practices, pilots, as well as ways to increase the adoption of circular bioeconomy concepts, mainly in rural areas.
- ▣ The ultimate goal of the cluster is to speed up the development of the whole bioeconomy by sharing knowledge on project outcomes and supporting dissemination and communication activities related to existing knowledge of the bioeconomy.



Follow at:

<https://www.linkedin.com/company/rural-bioeconomy-alliance-rba/>



## European Bioeconomy Network (EUBIONET)



- EuBioNet is a **cluster of more than 120 European-funded projects** aimed at maximise the impact of bioeconomy projects through:
  - Facilitating collaborations among projects and initiatives
  - Foster knowledge exchange and mutual learning
  - Promote the exploitation of EuBioNet projects' outcomes through the creation of thematic collections of Actionable Knowledge stemming from several projects to make them available

Follow at:

[www.eubionet.eu](http://www.eubionet.eu)



## APRE's role in supporting local bio-based solutions in European rural areas

- ▣ Stakeholders' mapping and engagement
- ▣ Capacity building for stakeholders, in particular policy makers
- ▣ Raising awareness actions for citizens and general public
- ▣ Consolidation of social and policy recommendations
- ▣ Support in the development of innovative governance models



Email: [segreteria@apre.it](mailto:segreteria@apre.it)

Tel. +39 06 48 93 9993

[www.apre.it](http://www.apre.it)



**Follow the Projects Department's activities**

[#apreprogetti](https://twitter.com/apreprogetti)

**RuralBioUp and BioModel4Regions Main Contact person:**

Karolina JURKIEWICZ: [jurkiewicz@apre.it](mailto:jurkiewicz@apre.it)

**Bluerev Main contact person:**

Ilaria BIENTINESI: [bientinesi@apre.it](mailto:bientinesi@apre.it)

**Chiara Pocaterra is Advisory Board Member of the ROBIN project (twin project of RuralBioUp):**

<https://www.linkedin.com/company/robinhorizonproject/>

**Follow me:**

<https://www.linkedin.com/in/chiarapocaterra/>